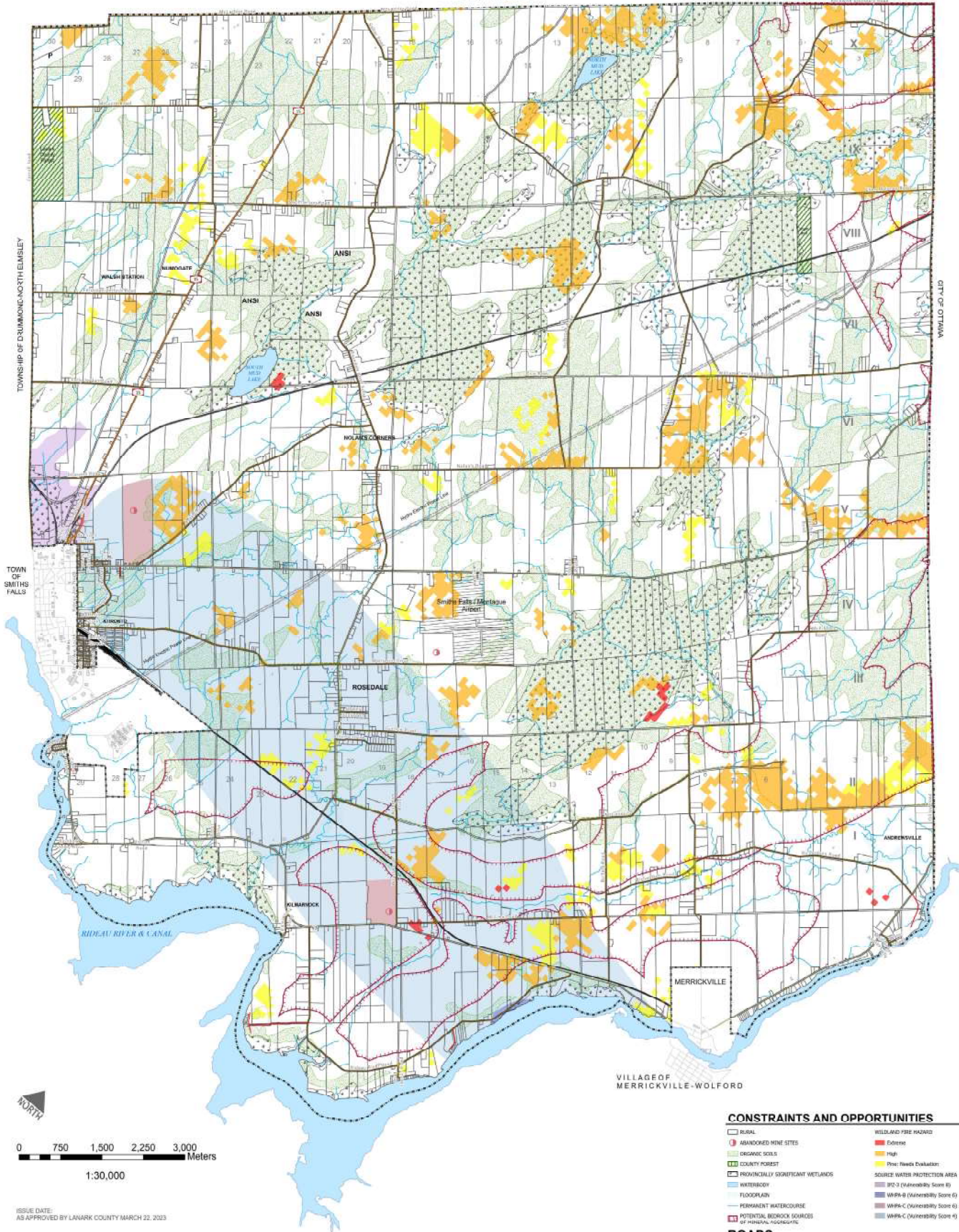




Township of Montague OFFICIAL PLAN SCHEDULE B

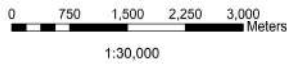
BECKWITH TOWNSHIP



TOWNSHIP OF DRUMMOND-NORTH ELSLEY

TOWN OF SMITHS FALLS

WILLOU JO ALD



ISSUE DATE:
AS APPROVED BY LANARK COUNTY MARCH 22, 2023

Jp2g Consultants Inc.
BUSINESS PLANNERS PROJECT MANAGERS

SOI DETAILS PRODUCED BY JPS CONSULTANTS INC. WITH DATA SUPPLIED BY THE CENTRE FOR ENVIRONMENTAL INFORMATION. ALL COSES AND ZONING MAP SCHEDULES ARE NOT INTENDED TO BE USED FOR LEGAL PURPOSES OR TO IDENTIFY EXACT LOCATIONS OF MAP ELEMENTS. VERIFICATION AND SURVEY OF EXISTING CONDITIONS IS REQUIRED TO CONFIRM ACTUAL LOCATION OF EXISTING CONDITIONS AND/OR PROPOSED ELEMENTS.

CONSTRAINTS AND OPPORTUNITIES

- WILDLAND FIRE HAZARD
 - Extremely High
 - High
 - Fire: Needs Evaluation
- ABANDONED MINE SITES
- ORGANIC SOILS
- COUNTY FOREST
- PROVINCIALY SIGNIFICANT WETLANDS
- WATERBODY
- FLOODPLAIN
- PERMANENT WATERCOURSE
- POTENTIAL BEDROCK SOURCES OF MINERAL, GEOGENIC
- SOURCE WATER PROTECTION AREA
 - SR2-2 (Vulnerability Score E)
 - WRPA-B (Vulnerability Score G)
 - WRPA-C (Vulnerability Score G)
 - WRPA-C (Vulnerability Score E)

ROADS

- Schedule B
 - THROUGH ROAD
 - COUNTY ROAD
 - PROVINCIAL HIGHWAY
 - TRAIL