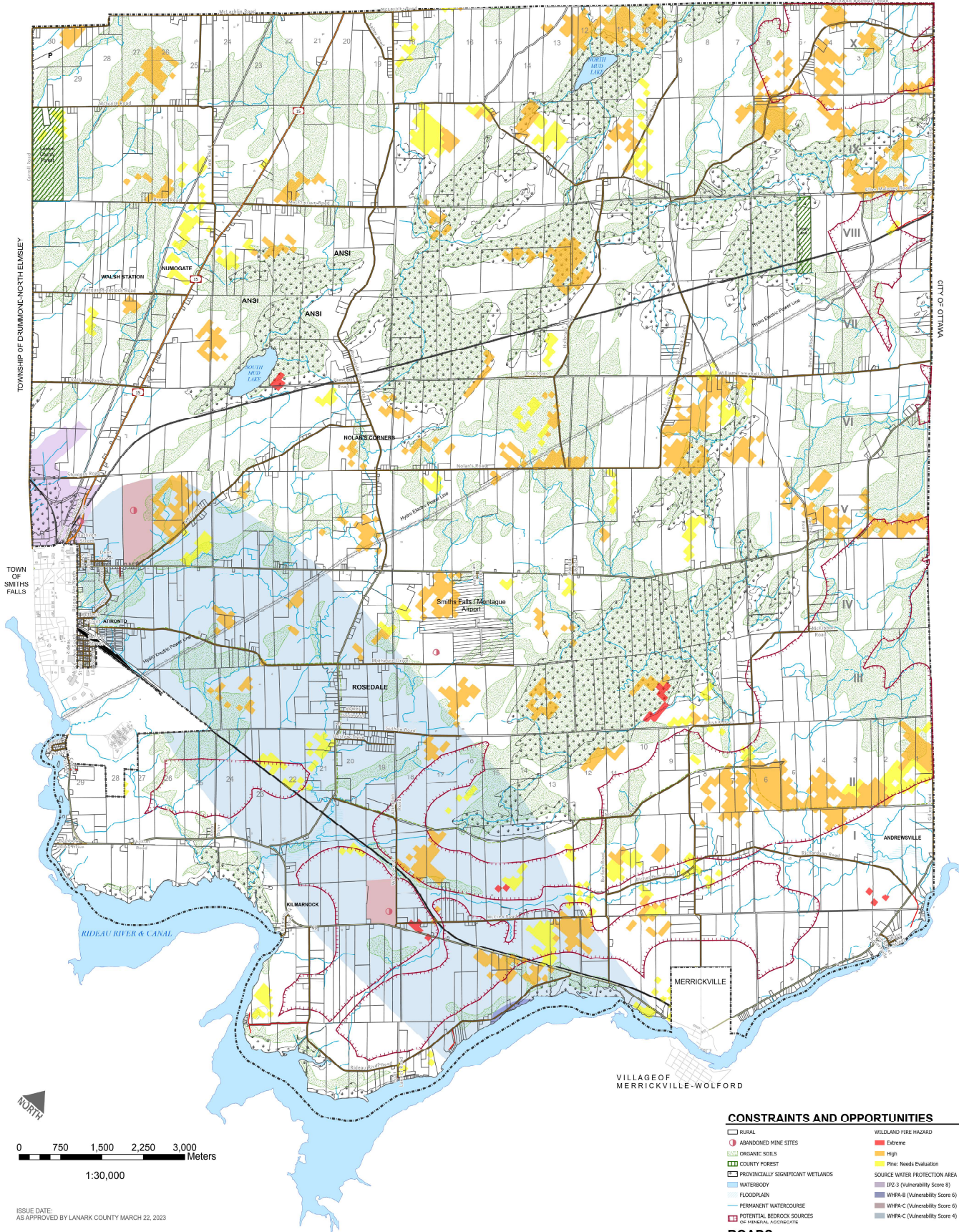




Township of Montague OFFICIAL PLAN SCHEDULE B

BECKWITH TOWNSHIP

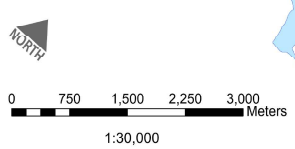


TOWNSHIP OF DUNDAS/NORTH ELSIEY

TOWN OF SMITHS FALLS

CITY OF OTTAWA

VILLAGE OF MERRICKVILLE-WOLFORD



ISSUE DATE:
AS APPROVED BY LANARK COUNTY MARCH 22, 2023

Jp2g Consultants Inc.
ENGINEERS - PLANNERS - PROJECT MANAGERS

SCHEDULE B IS PRODUCED BY JP2G CONSULTANTS INC. WITH DATA SUPPLIED BY THE CENTRE FOR GEOGRAPHIC INFORMATION SYSTEMS (CGIS) AND ANIMATED. MAP SCHEDULES ARE NOT INTENDED TO BE USED FOR LEGAL PURPOSES OR TO IDENTIFY EXACT LOCATIONS OF PROPERTY. IDENTIFICATION AND SURVEY OF EXISTING CONDITIONS IS REQUIRED TO CONFIRM ACTUAL LOCATION OF EXISTING CONDITIONS AND/OR PROPOSED ELEMENTS.

CONSTRAINTS AND OPPORTUNITIES

RURAL	WILDLAND FIRE HAZARD
ABANDONED MINE SITES	Extreme
ORGANIC SOILS	High
COUNTY FOREST	Final Needs Evaluation
PROVINCIALLY SIGNIFICANT WETLANDS	SOURCE WATER PROTECTION AREA
WATERSHED	ITZ-3 (Vulnerability Score 4)
FLOODPLAIN	WHPA-B (Vulnerability Score 6)
PERMANENT WATERCOURSE	WHPA-C (Vulnerability Score 6)
POTENTIAL BEDROCK SOURCES OF MINERAL OCCURRENCE	WHPA-D (Vulnerability Score 4)

ROADS

Schedule B	TOWNSHIP ROAD	PROVINCIAL HIGHWAY
PRIVATE ROAD	COUNTY ROAD	TRAILS